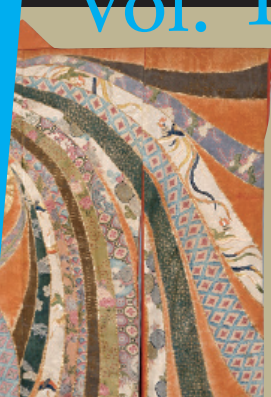


NEWSLETTER
JULY TO SEPTEMBER 2019

KYOTO NATIONAL MUSEUM

Vol. 142



Feature Exhibition New Acquisitions

July 2–August 4, 2019, Heisei Chishinkan Wing, Galleries 1F-3–6

Every year the Kyoto National Museum welcomes many new works of art into its collection, acquired either by purchase or by generous donation from private collections. This exhibition features some of the most important works of art that entered the museum collection during the 2017 and 2018 fiscal years.

(By Miyakawa Teiichi, *Special Research Chair of Archaeology*; translation by Melissa M. Rinne)

Bird and Flowers, by Joki (dates unknown)
Kyoto National Museum



Important Cultural Property
Tachi Long Sword
Inscription by Kuniyoshi
Kyoto National Museum

Feature Exhibition in Celebration of ICOM Kyoto 2019 Masterworks of the Kyoto National Museum Temple and Shrine Treasures

August 14–September 16, 2019, Heisei Chishinkan Wing

The Kyoto National Museum was originally founded in the late nineteenth century as a repository for sacred treasures owned by temples and shrines. Even today, some of the most important works of art in its storage are not owned by the museum but entrusted on long-term loan. This exhibition of temple- and shrine-owned masterworks features some of the most exquisite and famous works of art in all of Japan—a veritable textbook of Japanese art treasures. This extraordinarily rare opportunity is being organized in honor of the ICOM (International Council of Museums) General Conference in Kyoto, September 1–7.

(By Kure Motoyuki, *Curator of Chinese Painting and Calligraphy*; translation by Melissa M. Rinne)



国際博物館会議 京都大会



Important Cultural Property
Kimono with Various Bundles
Yūzenshikai



Important Cultural Property
Waterfowls by Snowy Shore, right screen, by Kano Sansetsu (1590–1651)

Feature Exhibition Seeing Red!

July 2–August 12, 2019, Heisei Chishinkan Wing, Gallery 1F-2

Red is a color that surrounds us in our daily lives, but have you ever thought about what it means? In ancient Japan, the color red had connotations that we may no longer understand today. What is the meaning of red in Japanese art? How has red been used in clothing, stage costumes, and other kinds of objects? This exhibition, taking place over summer vacation, offers a chance for visitors of all ages and their families to explore the various meanings and uses of this most alluring color.

(By Abe Marina, Associate Curator of Education; translation by Melissa M. Rinne)

Round Dish with Qirin, Birds and Flowers
Kyoto National Museum



Male Haniwa with Hat
Excavation site unknown
Kyoto National Museum



Important Cultural Property
Document Box with Bamboo and Autumn
Plants in *Makie*
Kōdai-ji Temple, Kyoto



Important Cultural Property
Lotus-shaped Incense Burner
Attributed to Nonomura Ninsei
(dates unknown)
Hōkongō-in Temple, Kyoto



National Treasure
Sutra Container of Fujiwara no Michinaga
Kinpu Shrine, Nara



National Treasure
Seated Buddha Dainichi (Mahāvairocana),
center of the Seated Five Wisdom Buddhas
Anshō-ji Temple, Kyoto

Thematic Exhibitions in The Collection Galleries

3F-1 Ceramics

Ceramics of Japan and East Asia

July 9–August 12, 2019

Masterworks of the Kyoto National

Museum: Temple and Shrine Treasures

August 14–September 16, 2019

3F-2 Archaeological Relics

The Ancient Origins of Tottori and Hyōgo Prefectures

July 9–September 16, 2019

Masterworks of the Kyoto National

Museum: Temple and Shrine Treasures

August 14–September 16, 2019

2F-1 Illustrated Handscrolls

Entertaining Stories: *The Tale of the Crane* and *The Fart Scroll*

July 2–August 12, 2019

Masterworks of the Kyoto National

Museum: Temple and Shrine Treasures

August 14–September 16, 2019

2F-2 Buddhist Paintings

The Beauty of Esoteric Buddhist Iconographic Drawings: Vivifying Representations

July 2–August 12, 2019

Masterworks of the Kyoto National

Museum: Temple and Shrine Treasures

August 14–September 16, 2019

2F-3 Medieval Paintings

Animals in Medieval Ink Painting

July 2–August 12, 2019

Masterworks of the Kyoto National

Museum: Temple and Shrine Treasures

August 14–September 16, 2019

>>>

2F-4 Momoyama–Edo Paintings

The 220th Death Anniversary of Nagasawa Rosetsu

July 2–August 12, 2019

Masterworks of the Kyoto National Museum:
Temple and Shrine Treasures

August 14–September 16, 2019

2F-5 Chinese Paintings

Masterworks of Qi Baishi from the Suma Collection II

July 2–August 12, 2019

Masterworks of the Kyoto National Museum:
Temple and Shrine Treasures

August 14–September 16, 2019

1F-1 Sculpture

Buddhist and Shinto Images of Kyoto

July 2–August 12, 2019

Masterworks of the Kyoto National Museum:
Temple and Shrine Treasures

August 14–September 16, 2019

1F-2 Feature Exhibition

Seeing Red!

July 2–August 12, 2019

Masterworks of the Kyoto National Museum:
Temple and Shrine Treasures

August 14–September 16, 2019

1F-3 Calligraphy

New Acquisitions

June 2–August 4, 2019

Masterworks of the Kyoto National Museum:
Temple and Shrine Treasures

August 14–September 16, 2019

1F-4 Textiles and Costumes

New Acquisitions

June 2–August 4, 2019

Masterworks of the Kyoto National Museum:
Temple and Shrine Treasures

August 14–September 16, 2019

1F-5 Metalwork

New Acquisitions

June 2–August 4, 2019

Masterworks of the Kyoto National Museum:
Temple and Shrine Treasures

August 14–September 16, 2019

1F-6 Lacquerware

New Acquisitions

June 2–August 4, 2019

Masterworks of the Kyoto National Museum:
Temple and Shrine Treasures

August 14–September 16, 2019

ADMISSION

July 2–September 16, 2019:

Adult ¥520 (¥410)

Univ. Student ¥260 (¥210)

*Admission is free for youths of high school age and below, seniors over 70, visitors with disabilities and one caretaker, and for Campus Members including faculty. Please show I.D.
*Fees in parentheses are for groups of 20+.

September 18–October 10, 2019:

Admission to the Museum Gardens and Outdoor Exhibits

Adult ¥260 (¥210)

*Outdoor exhibits only. Admission includes a guide booklet to the Kyoto National Museum gardens and outdoor exhibits.
*Admission is free for university students and below, seniors over 70, visitors with disabilities and one caretaker, and for Campus Members including faculty. Please show I.D. The guide booklet is not provided with free admission.
*Fees in parentheses are for groups of 20+.

HOURS

July 2–September 16, 2019:

Tue., Wed., Thu., and Sun.

9:30 am– 5:00 pm (Entrance until 4:30 pm)

Fri. and Sat. (except September 7)

9:30 am– 9:00 pm (Entrance until 8:30 pm)

September 18–October 10, 2019:

9:30 am– 5:00 pm (Entrance until 4:30 pm)

CLOSED ON MONDAY (except September 2)

*When Monday is a national holiday, the museum remains open on Monday and closes the following Tuesday.
*The museum will be closed on October 11.

Partially closed during the following dates:

July 2–7, 2019

The Painting galleries (2nd floor) and the 1st floor galleries are open for viewing. The 3rd floor galleries are closed for exhibition installation.

August 6–12, 2019

The 3rd floor galleries, the 2nd floor galleries, and the 1st floor galleries (sculpture gallery and *Seeing Red!*) are open for viewing. The 1st floor galleries (Calligraphy, Textiles and Costumes, Metalwork, Lacquerware) are closed for exhibition installation.

September 18–October 10, 2019

Outdoor exhibits are open for viewing. The galleries are closed. We apologize for the inconvenience.

ACCESS

VIA JR OR SUBWAY

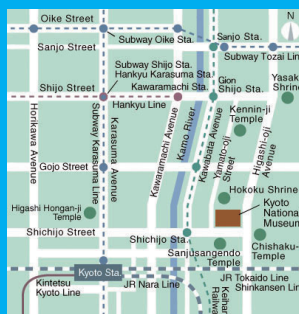
Get off at Kyoto Station. From bus platform D2 in front of the station, take City Bus #206 or #208 to "Hakubutsukan Sanjusangendo-mae" bus stop. One-minute walk to the Museum.

VIA KEIHAN RAILWAY

Get off at Shichijo Station. Walk east along Shichijo/ Nanajo Street (about seven minutes) to the museum.

VIA HANKYU RAILWAY

Get off at Kawaramachi Station. Walk east over the bridge to the Keihan Railway Gionshijo Station. Take Osaka-bound Keihan train to Shichijo Station. Walk east along Shichijo/ Nanajo Street (about seven minutes) to the museum.



KYOTO NATIONAL MUSEUM

527 Chaya-cho, Higashiyama-ku

Kyoto, Japan 605-0931

Tel. (075) 525-2473

<https://www.kyohaku.go.jp/>

Upcoming Exhibition

Special Exhibition

**The Thirty-Six Immortal Poets:
Elegant Arts of the Classical Japanese Court**
October 12–November 24, 2019, Heisei Chishinkan Wing

Cover: *Wind God and Thunder God*, detail, by Tawaraya Sōtatsu, National Treasure, Kennin-ji Temple, Kyoto. *Red Shaka (Sakyamuni)*, National Treasure, Jingo-ji Temple, Kyoto. *Document Box with Bamboo and Autumn Plants in Makie*, detail, Important Cultural Property, Kōdai-ji Temple, Kyoto. *Kimono with Various Bundles*, detail, Important Cultural Property, Yūzenshikai. *Waterfowls by Snowy Shore*, detail, by Kano Sansetsu, Important Cultural Property.