

NEWSLETTER
JULY TO SEPTEMBER 2016

KYOTO NATIONAL MUSEUM

Vol. 130

Feature Exhibition
Buddhist Art from Tango
300th Anniversary Feature Exhibition
Yosa Buson

Feature Exhibition

Buddhist Art from Tango

July 26–September 11, 2016, Heisei Chishinkan Wing, Galleries 1F-1 and 2

The Tango Peninsula is located on the far northern side of Kyoto prefecture, jutting out into the Japan Sea. As scholars have discovered in recent years, the region, though remote, has a rich Buddhist heritage, housing numerous icons that date from the Heian (794–1185) through Muromachi (1392–1573) periods.

This exhibition puts many such works on view, including, for the first time ever, a tenth century hidden Buddhist sculpture of the Thousand Armed Kannon (Avalokiteśvara) from Enjō-ji. This sacred early Heian period image is normally hidden away, even at its temple, making this exhibition an extraordinarily rare opportunity to view it in person.

(By Asami Ryūsuke, Senior Curator of Sculpture, Tokyo National Museum; translation by Melissa M. Rinne)



Important Cultural Property
Thousand Armed Kannon (Sahasrabhujā Arya Avalokiteśvara)
 Enjō-ji Temple, Kyoto, on view July 26–September 11, 2016



Legends of Tōraku-ji Temple, detail
 Takano Shrine, Kyoto, on view July 26–August 28, 2016, Gallery 2F-1

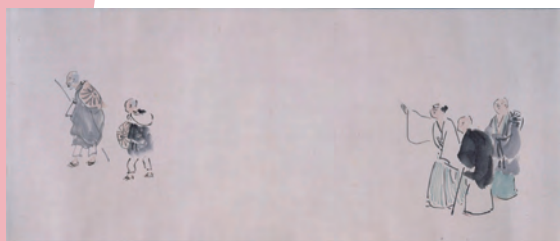
300th Anniversary Feature Exhibition

Yosa Buson

August 23–October 2, 2016, Heisei Chishinkan Wing, Galleries 2F-3 and 4

The renowned painter and haiku poet Yosa Buson (1716–1783) was born in Settsu province (present-day Osaka) but went to Edo (Tokyo) as a young man to study painting and poetry. He then took a long itinerant journey on foot through Japan's northern provinces. It was not until he was past the age of thirty-five that Buson finally settled down in Kyoto. Though he had full mastery of Ming and Qing Chinese painting styles, some of Buson's most distinctive works are his abbreviated, witty *haiga* sketches. This exhibition, celebrating the three hundredth anniversary of his birth, showcases the charm and genius of Buson's painting and poetry.

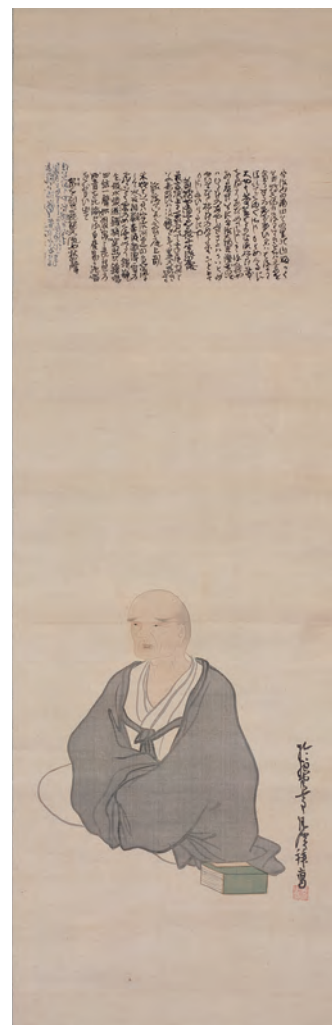
(By Fukushi Yūya, Associate Curator of Momoyama–Edo Paintings; translation by Melissa M. Rinne)



Important Cultural Property
The Narrow Road through the Provinces, detail
 By Yosa Buson
 Kyoto National Museum



Wild Horses, right screen, by Yosa Buson
 Kyoto National Museum



Portrait of Yosa Buson by Goshun
 Kyoto National Museum



Important Cultural Property
Buddha
 Kongōshin'in Temple, Kyoto, on view July 26–September 11, 2016



Important Cultural Property
Amitabha in Reddish Glow
 Nariai-ji Temple, Kyoto, on view July 26–August 28, 2016, Gallery 2F-2

Momoyama–Edo Paintings Edo Period Idols

July 20–August 21, 2016, Gallery 2F-4

Portraiture has a long history in Japan, but most early portraits of women depict religious or literary figures. Solo portraits of women outside these categories did not appear until the early Edo period (1615–1868). From the Momoyama period (1573–1615) through the beginning of Edo, artists began painting groups of contemporary women, usually in the pleasure quarters.

This formed the basis for the development of the single “beauty painting” genre—the “idols” of Edo period Japan. These depictions of women vary: some are anonymous images of idealized beauties; others portray actual figures; still others playfully combine historical imagery with contemporary models. Though these paintings of women were produced primarily for male connoisseurship, they are not necessarily devoid of religious or literary content. Indeed, evocative associations might enhance the interest of such paintings for their Edo period viewers.

(By *Fukushi Yūya*, Associate Curator of Momoyama–Edo Paintings; translation by *Melissa M. Rinne*)



Japanese Beauties of the Seventeenth Century
 By Kawanabe Kyōsai

3F-1 Ceramics

Ceramics of Japan and East Asia
 Japanese Ceramics from Medieval Kilns
 June 21–October 2, 2016

3F-2
Archaeological Relics
 Japanese Archaeological Artifacts
 June 21–October 2, 2016

2F-1
Illustrated Handscrolls
 Illustrated Handscrolls with Literary Themes: *Waka* and *Monogatari*
 June 14–July 24, 2016
Buddhist Art from Tango
 July 26–August 28, 2016
Illustrated Handscrolls and Wakasa Province
 August 30–October 2, 2016

2F-2
Buddhist Paintings
 Sacred Representations: Japanese Esoteric Buddhist Iconographic Drawings
 June 14–July 24, 2016

Buddhist Art from Tango
 July 26–August 28, 2016
Masterworks of Pure Land Buddhist Painting
 August 30–October 2, 2016

2F-3
Medieval Paintings
 Animals in Medieval Ink Painting
 June 14–July 18, 2016

Kano School Fan Paintings
 July 20–August 21, 2016
300th Anniversary, Yosa Buson
 August 23–October 2, 2016

2F-4 **Momoyama–Edo Paintings**
Tosa Mitsuoki and Early Modern Japanese *Yamato-e* Painting
 June 14–July 18, 2016
Edo Period Idols
 July 20–August 21, 2016
300th Anniversary, Yosa Buson
 August 23–October 2, 2016

2F-5 **Chinese Paintings**
Chinese Landscapes of Legend
 June 14–July 18, 2016
Chinese Paintings of Plants and Insects
 July 20–August 21, 2016
Chinese Paintings Admired by Japanese Literati of the Edo Period
 August 23–October 2, 2016

1F-1 **Sculpture**
Japanese Sculpture
 June 14–October 2, 2016
The Jōchō Style and Buddhist Sculpture of the Kei School
 June 14–July 24, 2016
Buddhist Art from Tango
 July 26–September 11, 2016
Wrathful Buddhist Deities
 September 13–October 2, 2016

1F-2 Feature Exhibition

The Tokugawa Shoguns and Kyoto

June 14–July 18, 2016

Buddhist Art from Tango

July 26–September 11, 2016

1F-3 Calligraphy

The Tokugawa Shoguns and Kyoto

June 14–July 18, 2016

Japan's Historical Documents

July 20–September 11, 2016

The Characters of Ancient Sutra Manuscripts

September 13–October 2, 2016

1F-4 Textiles and Costumes

Costumes of the Samurai Class

June 14–July 24, 2016

Costumes Used in Japanese Performing Arts

July 27–August 28, 2016

Autumnal Textile Designs

August 31–October 2, 2016

1F-5 Metalwork

Medieval Sword Mountings: Ornamenting the Samurai

June 14–August 7, 2016

Exquisite Buddhist Implements

August 9–October 2, 2016

1F-6 Lacquerware

Negoro Ware and Kamakura-bori

June 14–July 24, 2016

From Land and from Sea: East Asian Lacquers with Mother-of-Pearl Inlay

July 26–August 28, 2016

Makie Lacquers of the Edo Period

August 30–October 2, 2016

Upcoming Exhibition

150th Year Commemorative Special Exhibition

Sakamoto Ryōma: Japan's Favorite Hero

October 15–November 27, 2016

Sakamoto Ryōma (1836–1867) is one of Japan's most beloved historical figures. As a loyalist to the Emperor, he played an essential role in the overthrow of Japan's feudal Edo period shogunate, paving the way towards the establishment of the modern Meiji government. Born in Tosa province (today's Kochi prefecture), Ryōma, as he is popularly known, was assassinated 150 years ago in Kyoto, leaving behind numerous letters, documents, artworks, and historical objects, including recent discoveries. Ryōma's letters reveal a free-spirited, unconventional approach to life and an affectionate relationship with his family. This exhibition examines the personality and vision of Japan's most revered hero amidst the tumultuous history of the late Edo period (1615–1868).

300th Anniversary Feature Exhibition

Itō Jakuchū

December 13, 2016–January 15, 2017

Feature Exhibition

Early Birds: Celebrating the Year of the Rooster

December 13, 2016–January 15, 2017

Feature Exhibition

Sennyū-ji, Imperial Temple

December 13, 2016–February 5, 2017

ADMISSION

Adult ¥520 (¥410)

Univ. Student ¥260 (¥210)

Admission is free for youths of high school age and below.
Fees in parentheses are for groups of 20+

HOURS

9:30 am– 5:00 pm (Entrance until 4:30 pm)

CLOSED ON MONDAY

When Monday is a national holiday, the museum remains open on Monday and closes the following Tuesday.

The Collections Galleries will be closed until October 4, to 14, 2016. Outdoor exhibits are open for viewing. We apologize for the inconvenience.

ACCESS

Via JR or Subway

Get off at Kyoto Station. From bus platform D2 in front of the station, take City Bus #206 or #208 to "Hakubutsukan Sanjusangendo-mae" bus stop. One-minute walk to the Museum.

Via Keihan Railway

Get off at Shichijo Station. Walk east along Shichijo/Nanajo Street (about seven minutes) to the Museum.

Via Hankyu Railway

Get off at Kawaramachi Station. Walk east over the bridge to the Keihan Railway Gionshijo Station. Take Osaka-bound Keihan train to Shichijo Station. Walk east along Shichijo/Nanajo Street (about seven minutes) to the Museum.



KYOTO NATIONAL MUSEUM

527 Chaya-cho, Higashiyama-ku
Kyoto, Japan 605-0931
Tel. (075) 525-2473
<http://www.kyohaku.go.jp/>